

OFFICIAL CONFERENCE HOTEL

MARINA BAY SANDS (5 Star Hotel)

Address: 10 BAYFRONT AVENUE, MARINA BAY, SINGAPORE 018956

DESCRIPTION: Standing in the center of the 'Lion City' is one of the most magnificent landmarks in the tourism industry. Marina Bay Sands is a union of three luxurious hotels joined together by the beautiful state-of-the-art sky terrace, Sands SkyPark. Developed by the world-renowned gaming company, Las Vegas Sands, Marina Bay guarantees comfort and pleasure to all guests. Aside from the unique innovative architectural design, elegance can be found within every corner of the hotel's interior. Each room has a warm, comfortable setting and is fully equipped with superior amenities. Everything within Marina Bay Sands is set above the level of excellence. The hotel offers world-class gaming, new-concept bars, and hip clubs that help bring nightlife to another level. Experience a whole new definition of luxury, found only in Marina Bay Sands.

Transport Access to Venue

5- 8 mins walk to Sands Expo & Convention Centre

Room types & rates	Event Rate (Per Night)
Single/Twin/Double Room with 1 Bed or 2 Beds (Room & Wifi only)	On request
Single Room With 1 Bed For 1 Person with Breakfast	On request
Twin Room With 2 Beds For 2 Person with Breakfast	On request
Double Room With 1 Bed For 2 Person with Breakfast	On request



SUPPORTING HOTELS

CARLTON HOTEL (4 Star Hotel)

Address: 76 BRAS BASAH ROAD, CITY HALL, 189558 SINGAPORE, SINGAPORE

DESCRIPTION: Carlton Hotel is a luxurious property which features a gym. Free Wi-Fi is available in its lobby and restaurants. Luxurious and stylish, rooms are located over 3 wings and offer different views of the city. Each is equipped with a cable TV, minibar and ironing facilities. Tea/coffee making facilities are also included. Ensuite bathrooms have a bathtub. Centrally located along Bras Basah Road, Carlton Hotel Singapore is a short 5-minute walk from City Hall MRT Station and Raffles City Shopping Centre. It is a 20-minute drive from Changi International Airport. Guests can enjoy a relaxing massage or facial at the spa. A business centre lets guests check their emails while newspapers are available at the 24-hour front desk. The hotel also provides laundry and dry-cleaning services. Cafe Mosaic serves a delicious buffet spread of international cuisines. The award-winning Wah Lok Restaurant offers fine Cantonese dishes. After-dinner drinks can be enjoyed at Gravity Bar, which features live music at night. Tuxedo is a Cafe and Patisserie with a fine selection of freshly baked cakes and pastries, along with hand-pulled Italian coffee. City Hall is a great choice for travelers interested in shopping, food and sightseeing. Merlion Park - just 1,000 m away

Transport Access to Venue

*15 - 20 mins walk to Sands Expo & Convention Centre

*Subway: Circle Line (Esplanade Station <> Bayfront Station)

Room types & rates	Early Bird Rate Book on or before 17 March 2022 (Per Night)	Event Rate Book after 17 March 2022 (Per Night)
Single Room With 1 Bed For 1 Person with Breakfast	SGD 280.00++	SGD 350.00++
Double Room With 1 Bed For 2 Persons with Breakfast	SGD 300.00++	SGD 370.00++
Twin Room With 2 Beds For 2 Persons with Breakfast	SGD 300.00++	SGD 370.00++



CONRAD CENTENNIAL SINGAPORE (5 Star Hotel)

Address: 2 TEMASEK BLVD, SINGAPORE 038982

DESCRIPTION: Located in the vibrant Marina Bay, a mere 20 minutes from Changi International Airport, along with the area's increased attractions, Conrad Centennial Singapore is one of the Lion City's most esteemed address for the business and leisure traveler alike. Wake up in one of the newly refurbished guest rooms or suites that exude an air of effortless modern luxury with Asian touches. Accommodations start at a generous 40 square meters and feature thoughtful extras including stunning marble bathrooms with double-vanity sinks, separate bathtub and shower with rain shower, in-room Nespresso machine with complimentary capsules, branded bath amenities and 55" adjustable HD television sets.

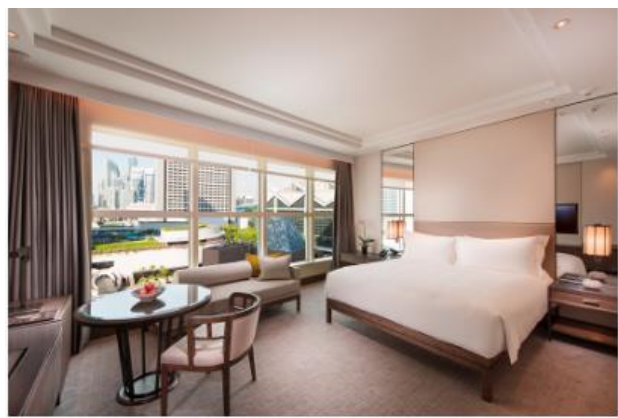
Hilton Honors guests checking into the Conrad Centennial Singapore can select the exact room of their choice and access their rooms with the Digital Key function on their smart phones using the Hilton Honors app. Guests can also pre-order their preference of bath amenities, choice of pillow from the extensive pillow menu, and room service all prior to arrival via the Conrad Concierge option on the Hilton Honors app.

Transport Access to Venue

*10 - 15 mins walk to Sands Expo & Convention Centre

*Subway: Circle Line (Esplanade Station<> Bayfront Station)

Room types & rates	Early Bird Rate Book on or before 17 March 2022 (Per Night)	Event Rate Book after 17 March 2022 (Per Night)
Single Room With 1 Bed For 1 Person with Breakfast	SGD 420.00++	SGD 450.00++
Double Room With 1 Bed For 2 Persons with Breakfast	SGD 450.00++	SGD 480.00++



FAIRMONT SINGAPORE (5 Star Hotel)
Address: 80 BRAS BASAH ROAD, SINGAPORE 189560

DESCRIPTION: The Fairmont Singapore is ideally situated at the crossroads of Singapore's business, cultural, entertainment, and shopping districts. It offers 769 luxurious guestrooms and suites, a collection of 16 distinctive restaurants and bars, and 70,000sqf of prime meeting space - all supported by award-winning service teams. In addition, guests have access to the Willow Stream Spa, one of the largest spa facilities in Asia, offering the best in spa and fitness services. Whatever the reason for your stay, Fairmont Singapore will make it a good one.

Transport Access to Venue

*20 mins walk to Sands Expo & Convention Centre

*Subway: Circle Line (Esplanade Station <> Bayfront Station)

Room types & rates	Event Rate (Per Night)
Single Room With 1 Bed For 1 Person with Breakfast	SGD 345.00++
Twin Room With 2 Beds For 2 Persons with Breakfast	SGD 375.00++



GRAND COPTHORNE WATERFRONT HOTEL (5 Star Hotel)

Address: 392 HAVELOCK ROAD, SINGAPORE 169663

DESCRIPTION: Grand Copthorne Waterfront Hotel is ideally located beside Zouk along the Singapore River, yet easily accessible by taxi from various business and entertainment hubs such as the central business district, Raffles Place, Orchard Road, and Chinatown. Ten minutes by taxi to Sentosa, Universal Studios, and the integrated resorts, the hotel boasts 574 exquisitely appointed guestrooms, each unit beautifully furnished, offering luxury, comfort, and relaxation. Grand Copthorne Waterfront Hotel's business facilities and the 34 versatile meeting rooms are among Singapore's best, featuring computer workstations, state-of-the-art audio-visual equipment and more. For added comfort, the hotel boasts broadband Internet in all units, health and fitness facilities, Jacuzzi, swimming pool and tennis courts to keep guests entertained. Situated just 22 kilometers (12 miles) away from Changi International Airport, Grand Copthorne Waterfront Hotel is a perfect place for anyone who appreciates luxury, convenience, and class while staying in Singapore.

Transport Access to Venue

*Taxi: 10 - 15 mins drive to Sands Expo & Convention Centre

*Subway: Downtown Line (Fort Canning Station <> Bayfront Station)

Room types & rates	Early Bird Rate Book on or before 17 March 2022 (Per Night)	Event Rate Book after 17 March 2022 (Per Night)
Single Room With 1 Bed For 1 Person with Breakfast	SGD 235.00++	SGD 245.00++
Double Room With 1 Bed For 2 Persons with Breakfast	SGD 255.00++	SGD 265.00++
Twin Room With 2 Beds For 2 Persons with Breakfast	SGD 255.00++	SGD 265.00++



GRAND PARK CITY HALL HOTEL (5 Star Hotel)
Address: 10 COLEMAN STREET SINGAPORE 179809

DESCRIPTION: Grand Park City Hall Hotel is in the heart of the city within close proximity to Marina Bay, Bugis, and Clarke Quay. All 333 rooms and suites are stylishly designed and equipped with modern amenities. You also have easy access to Funan IT Mall, Raffles City Shopping Mall, and CHIJMES. The property is merely a one-minute walk from the City Hall MRT Station. The hotel's strategic location and state-of-the-art facilities make it a great choice for leisure and business travelers.

Transport Access to Venue

*20 mins walk to Sands Expo & Convention Centre

*Subway: East West Line, Downtown Line (City Hall Station <> Bugis Station <> Bayfront Station)

Room types & rates	Early Bird Rate Book on or before 17 March 2022 (Per Night)	Event Rate Book after 17 March 2022 (Per Night)
Single Room With 1 Bed For 1 Person with Breakfast	SGD 225.00 ++	SGD 245.00++
Double Room With 1 Bed For 2 Persons with Breakfast	SGD 235.00++	SGD 255.00++
Twin Room With 2 Beds For 2 Persons with Breakfast	SGD 235.00++	SGD 255.00++



HILTON SINGAPORE ORCHARD (5 Star Hotel)
Address: 333 ORCHARD ROAD, SINGAPORE 238867

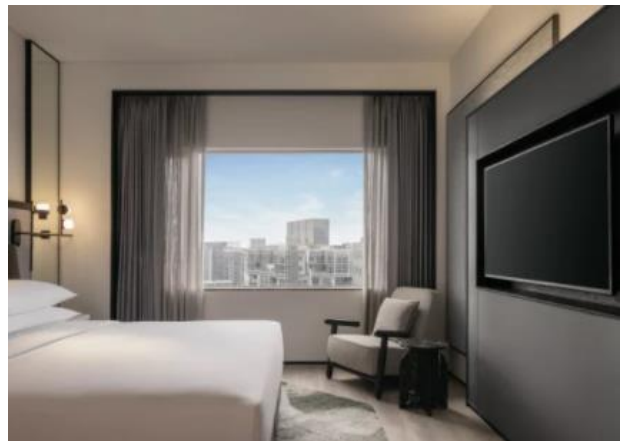
DESCRIPTION: Located in the center of Orchard Road, Hilton Singapore Orchard offers a prime spot for exploring the city's premium shopping and entertainment district. We're within walking distance of subway stations with connections to Marina Bay Sands, Gardens by the Bay, and Universal Studios Singapore. Discover five dining options, more than 1,000 rooms, and 2,400 square meters of event space.

Transport Access to Venue

*Taxi: 10 – 20 mins drive to Sands Expo & Convention Centre

*Subway: Circle Line (Orchard Station <> Bayfront Station)

Room types & rates	Event Rate (Per Night)
Single Room With 1 Bed For 1 Person with Breakfast	SGD 290.00++
Double Room With 1 Bed or Twin Room With 2 Beds For 2 Persons with Breakfast	SGD 310.00++



HOLIDAY INN EXPRESS SINGAPORE CLARKE QUAY (3 Star Hotel)

Address: 2 MAGAZINE ROAD, SINGAPORE 59573

DESCRIPTION: An award-winning Green Hotel in Singapore, Clarke Quay with FREE Breakfast and Wi-Fi offered. Our hotel is the smart hotel choice for savvy business and leisure travelers, offering a relaxed affordable and hassle free stay every time. We are located minutes away from Central Business District, Clarke Quay, and Robertson Quay, and it takes only 5 mins' walk from Clarke Quay and Chinatown MRT Stations. Our great location offers accessibility to Singapore's major attractions including Chinatown, Sentosa Island, Universal Studios, Gardens by the Bay, Suntec City and shopping district of Orchard Road. Located are near the mouth of the Singapore River, it only takes 30 minutes' drive to Changi Airport. With our BCA Green Mark Platinum status and Singapore Green Hotel Award 2015 in recognition of our hotel's green practices in environmental sustainability, you are helping to save our earth every time you stay with us.

Transport Access to Venue

*Taxi: 10 - 15 mins drive to Sands Expo & Convention Centre

*Subway: Downtown Line Chinatown Station <> Bayfront Station

Room types & rates	Early Bird Rate Book on or before 17 March 2022 (Per Night)	Event Rate Book after 17 March 2022 (Per Night)
Single Room With 1 Bed For 1 Person with Breakfast	SGD 180.00++	SGD 185.00++
Double Room With 1 Bed For 2 Persons with Breakfast	SGD 185.00++	SGD 190.00++
Twin Room With 2 Beds For 2 Persons with Breakfast	SGD 185.00++	SGD 190.00++



HOTEL CHANCELLOR @ORCHARD (3 Star Hotel)
Address: 28 CAVENAGH ROAD, SINGAPORE 229635

DESCRIPTION: Hotel Chancellor @Orchard is centrally located on Orchard Road where shopping, entertainment, and dining destinations are just minutes away. It is within a five-minute walk to Somerset and Dhoby Ghaut Mass Rapid Transport. Changi International Airport is just 17km away or a 20-minute drive from the hotel, and it is a 10-minute train ride to Bugis Village, Chinatown, or Little India. The hotel features 488 rooms with a desk, a safety deposit box, bed linens, a three-temperature water dispenser, and a bathroom with a shower and hair dryer. A 32-inch flat-screen Internet-ready LED TV, coffee/tea facilities, and high-speed Internet are included. Bistro@Chancellor Cafe serves a buffet breakfast every morning. It also has an alfresco seating area for those who prefer some morning sun. Other facilities offered are a 24-hour front desk, outdoor rooftop pool, meeting facilities, luggage storage, children's playground, and coin-operated laundry machines

Transport Access to Venue

*Taxi: 5 - 10 mins drive to Sands Expo & Convention Centre

*Subway: Circle Line (Dhoby Ghaut Station <> Bayfront Station)

Room types & rates	Event Rate (Per Night)
Single Room With 1 Bed For 1 Person with Breakfast	SGD 150.00++
Double Room With 1 Bed For 2 Persons with Breakfast	SGD 170.00++
Twin Room With 2 Beds For 2 Persons with Breakfast	SGD 170.00++



HOTEL GRAND CENTRAL (3 Star Hotel)

Address: 22 CAVENAGH ROAD/ORCHARD ROAD, SINGAPORE 229617

DESCRIPTION: Hotel Grand Central is centrally located in Singapore's iconic shopping destination, Orchard Road, where shopping, entertainment, and dining destinations are just minutes away. The hotel is within a 5-minute walk to Somerset and Dhoby Ghaut MRT stations. Recently renovated, the hotel offers guests luxurious accommodation. The hotel building is Greenmark certified, and its green efforts include installation of LED lighting, sensor lighting, and using equipment and fittings that are green ticked. Each room is equipped with an energy saving filtered water dispenser. The rooms also feature double-glazed windows, coffee/tea making facilities, and a safety deposit box. The private en-suite bathrooms come with a rain shower. The hotel provides complimentary Wi-Fi, and guests are also able to access the internet via the in-room 39-inch flat-screen LED TV which is Internet-ready. The hotel is equipped with a rooftop swimming pool, which offers a rare glimpse of lush greenery within Orchard Road. Other facilities include a fitness room on the 2nd floor and a 24-hour front desk which can assist guests with luggage storage. There are also meeting facilities for guests who require to use them. Located on the 2nd floor, The Central Breakfast Room serves breakfast buffets every morning, and The Sojourn Cafe offers all-day casual dining.

Transport Access to Venue

*Taxi: 5 - 10 mins drive to Sands Expo & Convention Centre

*Subway: Circle Line (Dhoby Ghaut Station <> Bayfront Station)

Room types & rates	Event Rate Per Night
Single Room With 1 Bed For 1 Person with Breakfast	SGD 160.00++
Double Room With 1 Bed For 2 Persons with Breakfast	SGD 180.00++
Twin Room With 2 Beds For 2 Persons with Breakfast	SGD 180.00++



HOTEL ROYAL @QUEENS (4 Star Hotel)
Address: 12 QUEEN STREET, SINGAPORE

DESCRIPTION: 4-Star Smoke Free Hotel is strategically located in the heart of the city's business, cultural and entertainment hubs; just a 1-minute walk from Bras Basah MRT. Local attractions within reach include Raffles City, Bugis Village, Suntec City, Esplanade Theatre by the Bay and Marina area. Wi-fi is available in all rooms and public areas in the hotel.

Transport Access to Venue

*Taxi: 5 - 10 mins drive to Sands Expo & Convention Centre

*Subway: Circle Line (Bras Bash Station <> Bayfront Station)

Room types & rates	Event Rate (Per Night)
Single Room With 1 Bed For 1 Person with Breakfast	SGD 190.00++
Double Room With 1 Bed For 2 Persons with Breakfast	SGD 190.00++
Twin Room With 2 Beds For 2 Persons with Breakfast	SGD 190.00++



IBIS SINGAPORE ON BENCOOLEN (3 Star Hotel)
Address: 170 BENCOOLEN STREET SINGAPORE 189657

DESCRIPTION: Enjoying an enviable location in the heart of Singapore's business and cultural district, Ibis Singapore on Bencoolen Hotel is an ideal accommodation. The hotel is just minutes away from the Bugis MRT station, and Changi Airport can be accessed by direct MRT line in just 30 minutes. Bugis, City Hall, the central business district, Little India, Mustafa Centre, and Orchard Road can be reached within walking distance. Featuring modish designs and contemporary furnishings, all rooms are decorated with timber floors and large bay windows. Each room comes with Wi-Fi internet access, international adaptors and USB charges, air conditioning, an LCD TV, and tea/coffee making facilities. The hotel includes Taste Restaurant which serves an international breakfast and local Singapore dishes. Ibis Singapore on Bencoolen Hotel is a brilliant place to stay.

Transport Access to Venue

*Taxi: 5 - 10 mins drive to Sands Expo & Convention Centre

*Subway: Downtown Line (Bencoolen Station <> Bayfront Station)

Room types & rates	Early Bird Rate Book on or before 17 March 2022	Event Rate Book after 17 March 2022
Single Room With 1 Bed For 1 Person with Breakfast	SGD 145.00 ++	SGD 155.00++
Double Room With 1 Bed For 2 Persons with Breakfast	SGD 155.00++	SGD 165.00++
Twin Room With 2 Beds For 2 Persons with Breakfast	SGD 155.00++	SGD 165.00++



INTERCONTINENTAL SINGAPORE (5 Star Hotel)
Address: 80 MIDDLE ROAD, SINGAPORE 188966

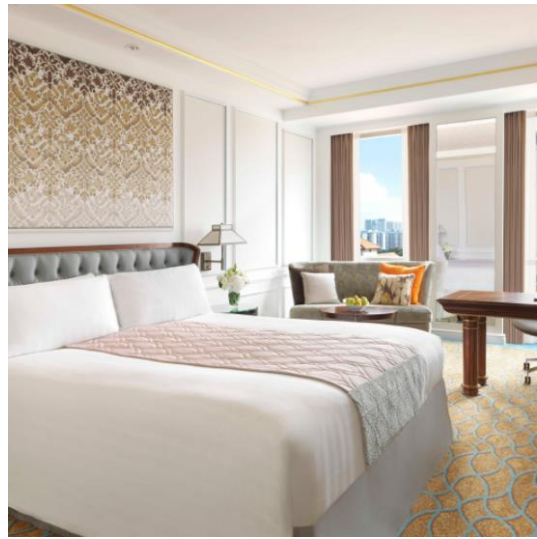
DESCRIPTION: Since its opening in 1995, InterContinental Singapore Hotel has become a distinctive landmark in the heart of the civic and cultural districts of Bugis. The hotel features 403 luxuriously appointed rooms and suites including deluxe rooms, luxurious shop house rooms, business rooms, and a range of luxury suites. The hotel is directly connected to Bugis Junction Mall and Bugis MRT station for convenient access to the main shopping and entertainment belt in Orchard Road. The hotel is a five-minute drive to the central business district, a seven-minute drive to the Marina Bay area, and a mere five-minute walk to Raffles Hospital. With attentive staff, superb facilities, and a range of dining options, InterContinental Singapore Hotel is the perfect environment for business and pleasure.

Transport Access to Venue

*Taxi: 5 - 10 mins drive to Sands Expo & Convention Centre

*Subway: Downtown Line (Bencoolen Station <> Bayfront Station)

Room types & rates	Event Rate (Per Night)
Single Room With 1 Bed For 1 Person with Breakfast	SGD 320.00
Double Room With 1 Bed For 2 Persons with Breakfast	SGD 350.00
Twin Room With 2 Beds For 2 Persons with Breakfast	SGD 350.00



JW MARRIOTT SINGAPORE SOUTH BEACH (5 Star Hotel)

Address: 30 BEACH ROAD, ACCESS VIA NICOLL HIGHWAY, SINGAPORE 189763

DESCRIPTION: A design-led landmark in the heart of Singapore's art and culture district, the JW Marriott Hotel Singapore South Beach fuses contemporary architecture with restored heritage in a brilliant show of form and function. Occupying three heritage buildings and two new hotel blocks, the luxury hotel features 634 guest rooms including 47 suites, 17 meeting rooms/venues, a grand ballroom with Philippe Starck-design interiors, 2 sky gardens, 2 outdoor pools, the signature Spa by JW and nine unique food and beverage concept outlets, including a restaurant helmed by world renowned Chef, Akira Back, of Iron Chef America fame. Located near Singapore's key tourist attractions, Shenton Way Central Business District (CBD) and the Marina Bay entertainment and business district, the JW Marriott Hotel Singapore South Beach is the perfect choice for leisure and corporate travellers seeking enriching experiences and hospitality excellence.

Transport Access to Venue

*20 mins walk to Sands Expo & Convention Centre

*Subway: Downtown Line (Promenade Station <> Bayfront Station)

Room types & rates	Early Bird Rate Book on or before 17 March 2022 (Per Night)	Event Rate Book after 17 March 2022 (Per Night)
Single Room With 1 Bed For 1 Person with Breakfast	SGD 340.00++	SGD 350.00++
Double Room With 1 Bed For 2 Persons with Breakfast	SGD 370.00++	SGD 380.00++
Twin Room With 2 Beds For 2 Persons with Breakfast	SGD 370.00++	SGD 380.00++



M SOCIAL SINGAPORE (4 Star Hotel)
Address: 90 ROBERTSON QUAY, SINGAPORE 238259

DESCRIPTION: M Social Singapore designed by Philippe Starck, is located along Singapore River overlooking Robertson Quay. Entrance features two steel peanut sculptures for a cheeky touch. Nearby, a hulking, cube stows guests' luggage if they arrive or check out early. Guest's experience starts with a self-check-in kiosk, collect key cards and head straight up to their rooms. The Nice Room features bare concrete walls with mirrored surfaces. A striking, 4m-tall, pitched roof, creates a spacious vibe and feels like home. The Big Room is a duplex-style loft with raw marble flooring and a roomy sofa bed on the first level. A queen-sized bed sits on the mezzanine level. Nesting tables facilitates those who need to work. Open-concept closets and wash basin are under the stairs. The Nicer Room and The Bigger Room types come with attached terraces. For some sun and exercise, a pool on the fifth floor. Beast & Butterflies, restaurant and mixologist bar on the ground floor serve 20 signature cocktails. A collection of tablets hanging on the walls provides the ambience or hangout at the 13m-long bar. Another highlight is the eight different chandeliers, housed in their own alcoves, as projectors flash psychedelic images through the light fixtures.

Transport Access to Venue

- *Taxi: 10 - 15 mins drive to Sands Expo & Convention Centre
- *Subway: Downtown Line (Fort Canning Station<> Bayfront Station)

Room types & rates	Early Bird Rate Book on or before 17 March 2022 (Per Night)	Event Rate Book after 17 March 2022 (Per Night)
Single Room with 1 Bed For 1 Person with Breakfast	SGD 195.00++	SGD 210.00++
Twin Room With 2 Beds For 2 Persons with Breakfast	SGD 215.00++	SGD 230.00++
Double Room With 1 Bed For 2 Persons with Breakfast	SGD 215.00++	SGD 230.00++



MANDARIN ORIENTAL SINGAPORE (5 Star Hotel)

Address: 5 RAFFLES AVENUE MARINA SQUARE SINGAPORE 039797

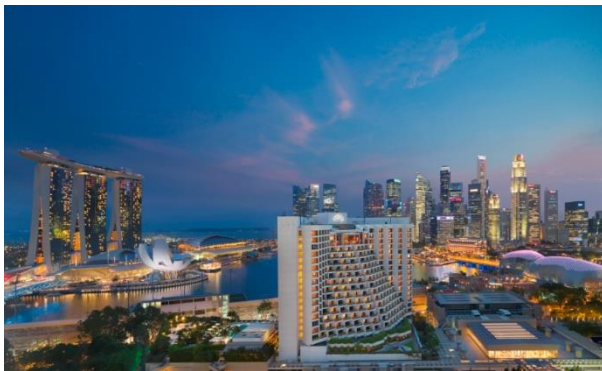
DESCRIPTION: Towering over Marina Bay, Mandarin Oriental, Singapore, features an outdoor pool with stunning cityscape views and a luxurious spa. Guests can keep fit at the gym or with Yoga classes. Mandarin Singapore is directly linked to Marina Square Shopping Centre, a 10-minute walk from City Hall MRT Station. A 10-minute drive brings guests to the shopping haven of Orchard Road, while Singapore Changi Airport is a 20-minute ride away. Floor-to-ceiling windows in Oriental Singapore's rooms overlook the harbour, ocean, or city skyline. A surround sound system with CD and DVD options is provided in each room. Cable TV channels and tea/coffee makers are provided. En suite bathrooms offer bathtubs. A separate children's pool is available for young ones. A range of pampering massage treatments is available for tired bodies. Tennis courts provide guests the opportunity to maintain their fitness while visiting. Dolce Vita features Italian dining by the pool with harbour views while Axis Bar and Lounge offers a variety of cocktails and live entertainment. Mandarin Oriental offers 4 other food and beverage options including Japanese and Cantonese cuisine.

Transport Access to Venue

*10 - 15 mins walk to Sands Expo & Convention Centre

*Subway: Downtown Line (Promenade Station <> Bayfront Station)

Room types & rates	Early Bird Rate Book on or before 17 March 2022 (Per Night)	Event Rate Book after 17 March 2022 (Per Night)
Single Room With 1 Bed For 1 Person with Breakfast	SGD 340.00++	SGD 375.00++
Twin Room With 2 Beds For 2 Persons with Breakfast	SGD 375.00++	SGD390.00++
Double Room With 2 Beds For 2 Persons with Breakfast	SGD375.00++	SGD390.00++



ORCHARD HOTEL SINGAPORE (5 Star Hotel)
Address: 442 ORCHARD ROAD, SINGAPORE 238879

DESCRIPTION: Located on Singapore's famous Orchard Road, this property offers contemporary style and comfort just five minutes from Ion Orchard, Forum Shopping Mall, and accessible to the Orchard MRT. Able to cater to even the most discerning guests, Orchard Hotel Singapore features 656 elegant, homey rooms that are secluded from the hustle and bustle of the city. Explore the nearby attractions which are just a short drive away, such as Dempsey Hill, Singapore Botanic Gardens, and Gleneagles Hospital. For the finest dining, visit the Hua Ting Restaurant, offering the best of Cantonese fare prepared by a master chef. Other on-site facilities for your comfort and convenience include a business center, meeting rooms, secretarial services, and disabled facilities are also available. Promising more than a good sleep, Orchard Hotel Singapore makes a wonderful trip for all.

Transport Access to Venue

*Taxi: 10 - 15 mins drive to Sands Expo & Convention Centre

*Subway: North South Line, Circle Line (Orchard Station<> Marina Bay Station <> Bayfront Station)

Room types & rates	Early Bird Rate Book on or before 17 March 2022 (Per Night)	Event Rate Book after 17 March 2022 (Per Night)
Single Room With 1 Bed For 1 Person with Breakfast	SGD 245.00++	SGD 255.00++
Double Room With 1 Bed For 2 Persons with Breakfast	SGD 265.00++	SGD 275.00++
Twin Room With 2 Beds For 2 Persons with Breakfast	SGD 265.00++	SGD 275.00++



PAN PACIFIC SINGAPORE (5 Star Hotel)

Address: 7 RAFFLES BOULEVARD MARINA SQUARE SINGAPORE 039595

DESCRIPTION: Revel in one of the top 10 luxury hotels in Singapore - Pan Pacific Singapore, situated in Marina Bay and two major shopping malls. The train stations of Promenade and City Hall are less than a 5-minute walk away, providing easy access to popular attractions. Historical landmarks, including the Padang, the Cenotaph, and the commemorative landing site of Sir Stamford Raffles, are situated in the vicinity of the hotel. The 790 contemporary guestrooms and suites include complimentary Wi-Fi and parking for in-house guests. Discerning travelers can opt to enhance their stay with Pacific Club Lounge access located on level 38 with panoramic views of Marina Bay and complimentary benefits including a champagne breakfast, afternoon tea, sunset cocktails and canapes, prior check-in, late check-out, and more. Savor the tranquility of a day well-spent at the award-winning spa, unwind as skilled masseurs offer traditional Chinese therapy treatments, or pamper yourself with signature St. Gregory treatments that include facials, massages, and more. Other leisure facilities include an outdoor swimming pool and a 24-hour fitness center.

Transport Access to Venue

*10 - 15 mins walk to Sands Expo & Convention Centre

*Subway: Circle Line (Esplanade Station <> Bayfront Station)

Room types & rates	Event Rate (Per Night)
Single Room With 1 Bed For 1 Person with Breakfast	SGD 290.00++
Double Room With 1 Bed For 2 Persons with Breakfast	SGD 325.00++
Twin Room With 2 Beds For 2 Persons with Breakfast	SGD 325.00++



PARKROYAL COLLECTION MARINA BAY (5 Star Hotel)

Address: 6 RAFFLES BOULEVARD MARINA SQUARE SINGAPORE 39594

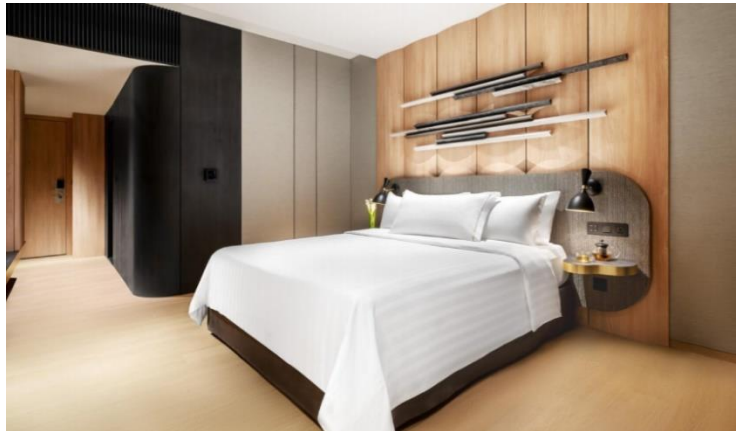
DESCRIPTION: Sitting in the heart of the Marina precinct, PARKROYAL COLLECTION Marina Bay now beats with a new rhythm of vibrancy and energy. A gateway to world-class attractions and entertainment, major convention and exhibition centres, the hotel is an ideal base in the garden city of Singapore, whether for business or leisure. With balconies affording breath-taking views of the city or the bay, the 575 rooms and suites offer rest and respite in effortless comfort. Extensive meeting facilities, including a pillar-free grand ballroom that can accommodate up to 700 people, are also available for every function, meeting, or social event. From the outdoor mineral water swimming pool to award-winning Chinese fare and Halal-certified Asian and International buffet spread, your guests can expect an experience that is refreshing on many levels. PARKROYAL COLLECTION Marina Bay is situated directly opposite Suntec Singapore Convention & Exhibition Centre, which is a short 5-minute walk from the hotel via a sheltered link-bridge from Marina Square Shopping Mall.

Transport Access to Venue

*10 - 15 mins walk to Sands Expo & Convention Centre

*Subway: Circle Line (Esplanade Station <> Bayfront Station)

Room types & rates	Event Rate (Per Night)
Single Room with 1 Bed For 1 Person with Breakfast	SGD 305.00++
Double Room With 1 Bed For 2 Persons with Breakfast	SGD 335.00++
Twin Room With 2 Beds For 2 Persons with Breakfast	SGD 335.00++



STUDIO M (4 Star Hotel)

Address: 3 NANSON ROAD, CLARKE QUAY, SINGAPORE 238910

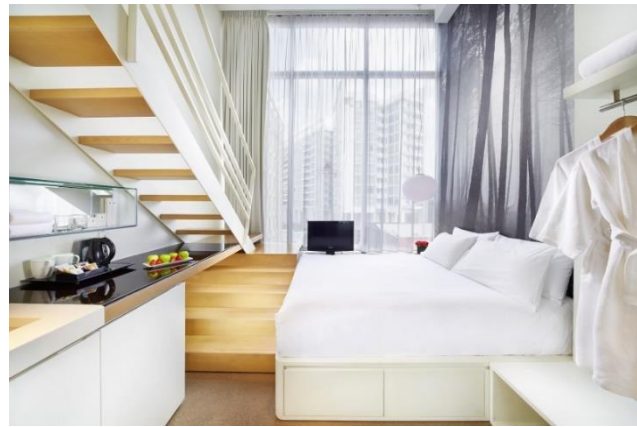
DESCRIPTION: This property by Millennium & Copthorne Hotels was opened in March 2010 with the unique concept that boasts its chic and contemporary designs. The interiors are perfectly designed with classic and subtle colors. This property clearly reflects the ideas of Italian maestro and architect Piero Lissoni. All the 360 rooms are divided into four different types of loft rooms, all of which feature great amenities and guests can enjoy free access to wireless connectivity throughout the hotel. Within close proximity to Robertson Quay, guests will find a variety of dining and entertainment options. All things considered; Studio M Hotel is a great place of stay.

Transport Access to Venue

*Taxi: 5 - 10 mins drive to Sands Expo & Convention Centre

*Subway: Downtown Line (Fort Canning Station <> Bayfront Station)

Room types & rates	Early Bird Rate Book on or before 17 March 2022 (Per Night)	Event Rate Book after 17 March 2022 (Per Night)
Single Room With 1 Bed For 1 Person with Breakfast	SGD 210.00++	SGD 230.00++
Double Room With 1 Bed For 2 Persons with Breakfast	SGD 230.00++	SGD 240.00++
Twin Room With 2 Beds For 2 Persons with Breakfast	SGD 230.00++	SGD 240.00++



V HOTEL BENCOOLEN (3 Star Hotel)

Address: 48 BENCOOLEN STREET, SINGAPORE 189627

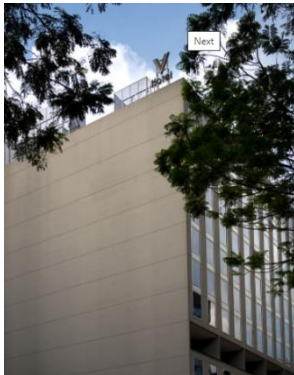
DESCRIPTION: Located in the heart of the city (Bugis District, Singapore vibrant arts enclave) just 5-minutes away from the National Museum, V Hotel Bencoolen features an outdoor swimming pool, elegantly furnished guestrooms and a 24-hour front desk. This cosy hotel is situated just 2-minutes away from Singapore Arts Museum and Bras Basah MRT Station. The vibrant Orchard Road is just a 10-minute walk away and Changi International Airport is 20-minutes away by taxi. Decorated in shades of deep purple, the air-conditioned rooms at V Hotel Bencoolen include a flat-screen TV, full length wardrobe, and minibar. Bathroom facilities are en suite and include a hairdryer. Various dining options including 24-hour local eateries are available within a short 5-minute stroll.

Transport Access to Venue

*Taxi: 5 - 10 mins drive to Sands Expo & Convention Centre

*Subway: Circle Line (Bras Basah Station <> Bayfront Station)

Room types & rates	Early Bird Rate Book on or before 17 March 2022 (Per Night)	Event Rate Book after 17 March 2022 (Per Night)
Single Room With 1 Bed For 1 Person with Breakfast	SGD 145.00++	SGD 150.00++
Double Room With 1 Bed For 2 Persons with Breakfast	SGD 165.00++	SGD 175.00++
Twin Room With 2 Beds For 2 Persons with Breakfast	SGD 165.00++	SGD 175.00++



V HOTEL LAVENDER (3 Star Hotel)
Address: 70 JELICOE ROAD SINGAPORE 208767

DESCRIPTION: Conveniently located above Lavender MRT Station, V Hotel Lavender features modern rooms and facilities such as an outdoor swimming pool and fitness centre at the sky terrace with view of the city. V Hotel Lavender is a 5-minute drive from Sim Lim Square and Bugis Village Shopping Street. Changi International Airport is 25 minutes by car from the hotel. Cosy guestrooms feature modern interiors and furnishings. Each is equipped with a flat-screen cable TV and safe box. Tea and coffee making facilities are provided. The hotel has a tour desk to assist with sightseeing arrangements. A business center offers computer access for guests' convenience. Dry cleaning service can be arranged, while coin-operated laundry machines are available on site. Guest can take a 10-minute walk to Kampong Glam (Arab Street), a charming area with many Malay and Arab shophouses and eateries.

Transport Access to Venue

*Taxi: 5 - 10 mins drive to Sands Expo & Convention Centre

*Subway: East West Line, Downtown Line (Lavender Station <> Bugis Station <> Bayfront Station)

Room types & rates	Early Bird Rate Book on or before 17 March 2022 (Per Night)	Event Rate Book after 17 March 2022 (Per Night)
Single Room With 1 Bed For 1 Person with Breakfast	SGD 145.00++	SGD 150.00++
Double Room With 1 Bed For 2 Persons with Breakfast	SGD 165.00++	SGD 175.00++
Twin Room With 2 Beds For 2 Persons with Breakfast	SGD 165.00++	SGD 175.00++



VILLAGE HOTEL ALBERT COURT (4 Star Hotel)
Address: 180 ALBERT STREET SINGAPORE 189971

DESCRIPTION: Village Hotel Albert Court by Far East Hospitality is in the Bugis area, with the new Rochor MRT Station right at the doorstep! Now you can enjoy the convenience and easy accessibility to the central business district, Marina Bay area, and other places of interest in Singapore in a shorter traveling time. Made up of restored pre-war shop houses, this charming boutique hotel offers a variety of dining options. Free unlimited Wi-Fi is available throughout the property. The rooms at Village Hotel Albert Court by Far East Hospitality feature a modern interior with traces of Straits Chinese decor. Each air-conditioned room is equipped with an in-room safe and cable television. Village Hotel Albert Court by Far East Hospitality has a well-equipped gymnasium. Other recreational facilities include a twin hot tub. The hotel has a tour desk to assist guests with travel arrangements. Albert Café serves an extensive spread of local and international dishes, while Shish Mahal Restaurant offers a taste of Northern Indian cuisine. Drinks and light refreshments can be enjoyed at the hotel's lobby bar. Village Hotel Albert Court by Far East Hospitality is a 2-minute walk from Sim Lim Square and a 10-minute walk from the popular Orchard Road. It is a 25-minute drive from Changi International Airport.

Transport Access to Venue

*Taxi: 10 - 15 mins drive to Sands Expo & Convention Centre

*Subway: Downtown Line (Little India Station <> Bayfront Station)

Room types & rates	Event Rate (Per Night)
Single Room With 1 Bed For 1 Person with Breakfast	SGD 160.00++
Double Room With 1 Bed For 2 Persons with Breakfast	SGD 180.00++
Twin Room With 2 Beds For 2 Persons with Breakfast	SGD 180.00++



VILLAGE HOTEL BUGIS (4 Star Hotel)

Address: 390 VICTORIA STREET SINGAPORE 188061

DESCRIPTION: Village Hotel Bugis by Far East Hospitality is in the most diverse area, close to the central business district, Suntec City, and Marina Bay. It is a three minutes' walk to Bugis MRT Station and five minutes from the Arab Street, Haji Lane, Kampong Glam, Bugis Village, and shopping establishments at Bugis Junction. The hotel houses 393 rooms with modern amenities and space ranging from 32sqm for both superior and the recently refurbished deluxe rooms. Village Hotel Bugis by Far East Hospitality is an ideal choice for all sorts of visitors since it's conveniently located to almost everything.

Transport Access to Venue

*Taxi: 10 - 15 mins drive to Sands Expo & Convention Centre

*Subway: Downtown Line (Rochor Station<->Bayfront Station)

Room types & rates	Event Rate (Per Night)
Single Room With 1 Bed For 1 Person with Breakfast	SGD 160.00++
Double Room With 1 Bed For 2 Persons with Breakfast	SGD 180.00++



VOCO ORCHARD SINGAPORE (FORMER HILTON SINGAPORE) (5 Star Hotel)

Address: 581 ORCHARD ROAD, SINGAPORE 238883

DESCRIPTION: Named by TripAdvisor as one of the top 25 luxury hotels in Singapore in 2013, based on traveler reviews, our hotel is ideal for a relaxing stay in Singapore. Conveniently located in Orchard Road, in the heart of premier shopping district, Hilton Singapore is shopping destination boasting two floors of luxury boutiques. Discover an array of exciting attractions nearby, including the iconic Ion Orchard Shopping mall & Takashimaya Shopping Center.

Transport Access to Venue

*Taxi: 10 - 15 mins drive to Sands Expo & Convention Centre

*Subway: North South Line, Circle Line (Orchard Station <> Marina Bay Station <> Bayfront Station)

Room types & rates	Early Bird Rate Book on or before 17 March 2022	Event Rate Book after 17 March 2022
Single Room With 1 Bed For 1 Person with Breakfast	SGD 255.00++	SGD 265.00++
Double Room With 1 Bed For 2 Persons with Breakfast	SGD 275.00++	SGD 285.00++
Twin Room With 2 Beds For 2 Persons with Breakfast	SGD 275.00++	SGD 285.00++

